

Editions Musicales Rubin

Bikeïran

*pour deux mandolines concertantes,
orchestre à plectres et percussion*

commande de l'État Français

Conducteur

Félix IBARRONDO

20^e et 21^e siècles

FCM
LE FONDS POUR LA
CREATION MUSICALE

EDITIONS RUBIN - Lyon FRANCE

Distribution : **Robert Martin**
350, chemin des Berthilliers
71850 Charnay-les-Macon - France



Nomenclature

Mandolines 1 solo

Mandolines 2 solo

Orchestre à plectres :

Mandolines I

Mandolines II

Mandoles

Guitares 1, 2, 3, 4

Contrebasse

Percussion :

Chimes (Red métallique)



5 Wood-blocks



1 Paire de Maracas



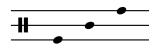
5 Toms



Caisse claire



3 Cymbales suspendues (aiguë, moyenne, grave)



Tamtam



Bikeïran

pour deux mandolines concertantes,
orchestre à plectres et percussion

Félix IBARRONDO

Durée : 15'

3+1/4 8 = 92 ca. 4/4 5/8 4/4 3/8

I
Mandolines

II
Mandolines

Mandolines solistes

Mandoles

3+1/4 8 = 92 ca. 4/4 5/8 4/4 3/8

Accord

Guitares

Contrebasse

Percussion

Chimes

ff

3/8 5/8 3/4 4/4

Mline sol. 1

Mline sol. 2

Perc. (Chimes)

5/8 6/8 2/4 6/8

Mline sol. 1

Mline sol. 2

Perc.

6/8 5/4 6/8 3/4 10/8 ♩ = ♩ préc. 6/8

I

Mline 1

Mline 2

II

Mline sol. 1

Mline sol. 2

Mdole

Perc. (Tamtam)

11 8 8 12 3/4 = . . préc.

I
Mline
II
Mline sol.
Mdole

11 8 8 12 3/4 = . . préc.

Cb.
Perc.

12 6 3/4 7/8 = . . 3/4+1/8

Guit.
Cb.
Perc. (Tamtam)

$\frac{3}{4} + \frac{1}{8}$ $\text{♩} = \text{♩}$ préc. $\frac{3}{4}$ $\frac{3}{8}$ $\frac{4}{4}$

30

I
Mline
1
2

II
1
2

Mline sol.
1
2

Mdole

$\frac{3}{4} + \frac{1}{8}$ $\text{♩} = \text{♩}$ préc. $\frac{3}{4}$ $\frac{3}{8}$ $\frac{4}{4}$

30

Guit.
1
2
3
4

Cb.

Perc.

1 **$\frac{3}{4} + \frac{1}{8}$** **$\frac{3}{4}$**

Mline I unis *sf* *f* *sf* *sf* *sf*

Mline II unis *sf* *f* *sf* *sf*

Mline sol. 1 *ff*

Mline sol. 2 *ff*

Mdole *sf* *f* *sf* *sf*

1 **$\frac{3}{4} + \frac{1}{8}$** **$\frac{3}{4}$**

Guit. 1 *ff*

Guit. 2 *ff*

Guit. 3 *ff*

Guit. 4 *f*

Cb. *f*

Tamtam

Perc. *f*

6/8 3/4 3/4+1/8 5/8 3/4

I
Mline
II

Mline sol.

Mdole

6/8 3/4 3/4+1/8 5/8 3/4

Guit.

Cb.

Perc.

3/4 9/8 2/4 3/4

I

Mline

II

Mline sol.

Mdole

3/4 9/8 2/4 3/4

Guit.

Cb.

Perc.

(Tamtam)

4. f

poco f

45

3/8

5/4

3/8

4/8

Mline I *f* *sf* *f* *f*

Mline II *f* *sf* *f* *f*

Mline sol. 1 *sf* *sf* *f* *f* *ff*

Mline sol. 2 *sf* *f* *f* *f*

Mdole *f* *f* *f*

3/8

5/4

3/8

4/8

Guit. 1 *f* *mf*

Guit. 2 *f* *mf*

Guit. 3 *mf* *f* *mf*

Guit. 4 *mf* *f* *mf*

Cb. *f* *f* *f* *f*

Perc. (Tamtam)

4/8

6/8

Plus lent ♩ = 72 ca.

3/8

5/4

Mline I

Mline II

Mline sol. 1

Mline sol. 2

Mdole

4/8

6/8

Plus lent ♩ = 72 ca.

3/8

5/4

10/16

Guit. 1

Guit. 2

Guit. 3

Guit. 4

Cb.

Perc. Toms

8/16 7/16 10/16 5/8 = 1/2 préc. 3/4 6/8

69

I

Mline

II

Mline sol.

Mdoie

69

8/16 7/16 10/16 5/8 = 1/2 préc. 3/4 6/8

Guit.

3

4

Cb.

Perc.

69 (Toms)

3

mf

3+1
4+8

1200

I

Mline

II

Mline sol.

Mdole

3+1
4+8

1200

Guit.

Cb.

Perc.

95 (Toms)

3+1 **3** **5**
4+8 **4** **8**

100 unis *ff*

Mline I

Mline II

100 *b*

Mline sol. 1 *sf* *sf* *ff* *ff*

2 *sf* *sf* *f*

100 *ff* *sf* *sf*

Mdole

3+1 **3** **5**
4+8 **4** **8**

100 *f* *f* *sf*

Guit. 1 *f* *f* *sf*

2 *f* *f* *sf*

3 *f* *f* *sf*

4 *f* *f* *f* *f*

100

Cb.

100 (Toms) 3 *ég* *égal*

Perc.

Detailed description of the musical score: The score is divided into two systems. The first system includes staves for Mline I and II (unison, *ff*), Mline sol. (two staves, triplets, *sf*, *ff*), and Mdole (100, *ff*, *sf*). The second system includes staves for Guit. (four staves, *f*, *sf*), Cb. (100), and Perc. (100, Toms, triplets, *ég*, *égal*). Time signatures **3+1**/**4+8**, **3**/**4**, and **5**/**8** are indicated above the first system. Dynamics include *ff*, *sf*, *f*, and *ég*.

105

I Mline

II Mline

Mdole

4+8

3+1

4

3

Guit.

1

2

3

4

Cb.

105

Perc. (Toms)

poco

110

I Mline

II Mline

Mdole

3/4

6/8

1+4

8+4 = 64 ca. chanté

6/8

5/4

Guit.

1

2

3

Cb.

110

pizz. pizz.

q.f>

5/4 1+4/4 1+3/4 5/8 6/4 3+1/8 4/4

Guit. 1 2 3 4

Cb.

Perc.

116

sonore

mf

pizz.

arco

f > mp

Caisse claire

subito

ff 3

f >

f

mf >

Cymbales

Tamtam

poco f

q. f

p. f >

p. f >

Mline I II

Mdole

122

div.

unis

div.

q. f

q. f

div.

q. f

4/4 1+4/4 5/8 4/4 6/8

Guit. 1 2 3 4

Cb.

Perc.

122

q. f

q. f

q. f

q. f

q. f

q. f

sf >

122 (Cymb.) metal.

quasi f

(Tamtam)

q. f

q. f

Caisse claire

f 3

sf 3

q. f

q. f

Mline sol. 128

1 *pp* > fugitif 6 3

2 *poco f* > 3

6/8 3/8 6/8 4/4 5/4 2/4

Guit. 128

1 *mf*

2 *mf*

3 *mf*

4 *mf*

Cb. 128

q. f > *f* > *f* > *pp*

3 3 3 3 3

Chimes 128 *subito*

fff

(C.cl.) *f* > *fff*

(Tamtam) *fff*

mf

Mline I 134 *p. f* div.

Mline II 134 *p. f* div.

Mline sol. 134

1 *p. f* > 3

2 *p. f* > 3

Mdole 134 *p. f* div.

2/4 4/4 6/8 4/4 5/4

Guit. 134

1 *p. f* > *p*

2 *p. f* > *p*

3 *p. f* > *p*

4 *p. f* > *p*

Cb. 134 *poco f* > *pp* sul pont. 6

Perc. 134

(Tamtam) *fff* Chimes *subito* Tamtam *mf*

5/4

12/8 $\text{♩} = 120 \text{ ca.}$

11/8

12/8

11/8

Guit. 1 2 3 4

Four guitar staves (1-4) showing rests for measures 140-143. In measure 144, the 4th staff has a melodic phrase starting with a *sf* dynamic.

Cb.

140 brusque!

ff *pp* *ff* *pp* *sf* *p* *f* *f*

3:2

Cello staff starting at measure 140 with a bass line. Dynamics include *ff*, *pp*, *sf*, *p*, *f*, and *f*. A 3:2 ratio is indicated above the staff.

Perc.

(Chimes) *ff* (L.V.)

Cymbales *mf*

(Tamtam) *mf*

Percussion staves for Chimes, Cymbales, and Tamtam. Chimes has *ff* dynamics and (L.V.) markings. Cymbales and Tamtam have *mf* dynamics.

≡

11/8

8/8

12/8

10/8

Guit. 1 2 3 4

Guitar staves 1-4 starting at measure 144. Staff 1 has a melodic phrase with a 4:3 ratio. Staff 2 has a melodic phrase with a *sf* dynamic. Staff 3 has a melodic phrase with a *f* dynamic. Staff 4 has a rhythmic accompaniment with a *f* dynamic.

Cb.

Cello staff starting at measure 144 with rests.

Perc.

q.f

Percussion staves starting at measure 144. A *q.f* dynamic is marked in the bottom staff.

10 **3** **2** **6** **10**
8 **4** **4** **8** **8**

$\text{♩} = 64 - 68$

Mline I
Mline II
Mline sol. 1
Mline sol. 2
Mdole

10 **3** **2** **6** **10**
8 **4** **4** **8** **8**

$\text{♩} = 64 - 68$

Guit. 1
Guit. 2
Guit. 3
Guit. 4
Perc.

(Tamtam)

152

5/8 **3/4** **3/4+1/8** **3/4** **2/4**

Mline I

Mline II

Mline sol. 1

Mline sol. 2

Mdole

5/8 **3/4** **3/4+1/8** **3/4** **2/4**

Guit. 1

Guit. 2

Guit. 3

Guit. 4

Perc. 152